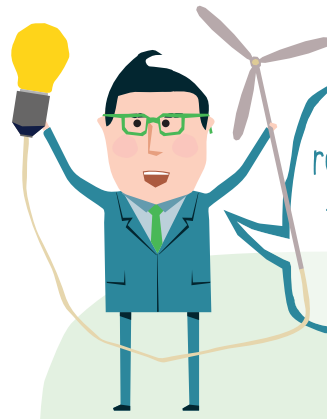


activities

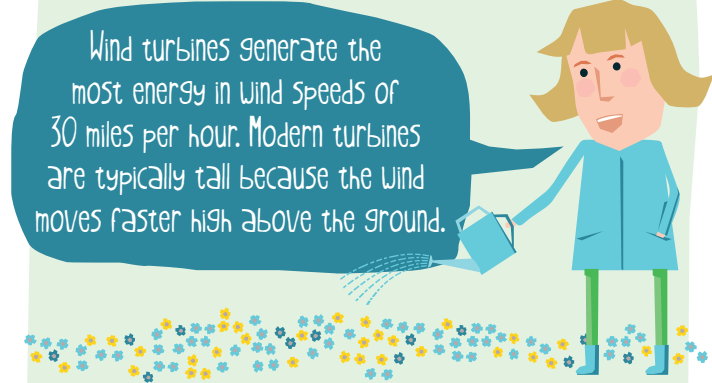
Find these words hidden in the grid. Words can be horizontal, vertical or diagonal and in any direction.

TURBINE CLIMATE CHANGE TOWER RENEWABLE ENERGY
 NATIONAL GRID ELECTRICITY ALTERNATIVE POWER
 GEARBOX FOUNDATION BLADE
 SUBSTATION WIND THRIVE ENVIRONMENT

S	E	L	P	D	E	N	V	I	R	O	N	M	E	N	T	C
T	H	R	I	V	E	Q	L	O	E	B	T	M	R	V	L	Y
O	R	D	W	N	N	A	T	I	O	N	A	L	G	R	I	D
W	G	E	M	G	E	A	R	B	O	X	X	C	G	K	P	N
E	T	S	N	W	I	O	J	L	Y	P	Y	G	E	B	T	A
R	U	F	O	E	J	K	D	T	I	R	O	D	N	O	S	L
G	R	D	R	K	W	I	N	D	R	J	W	W	T	G	Z	T
U	I	B	Y	P	E	A	F	O	N	E	T	X	E	O	J	E
N	K	L	N	O	N	T	B	O	O	W	U	W	R	R	L	R
D	Y	A	A	B	H	K	I	L	R	B	R	Y	I	T	L	N
A	I	D	T	G	P	T	O	M	E	G	B	T	H	B	Y	A
L	T	E	I	R	A	N	Y	J	L	E	I	P	G	W	G	T
U	H	B	V	D	X	W	G	Z	K	H	N	L	S	O	S	I
T	N	S	N	E	G	I	L	W	M	Q	E	E	K	X	B	V
G	S	U	B	S	T	A	T	I	O	N	H	D	R	A	T	E
D	O	E	C	L	I	M	A	T	E	C	H	A	N	G	E	O
F	M	K	J	E	L	E	C	T	R	I	C	I	T	Y	Y	N



There are lots of renewable energy technologies - wind, solar, hydro, biomass - which replace the need to burn fossil fuels like coal.

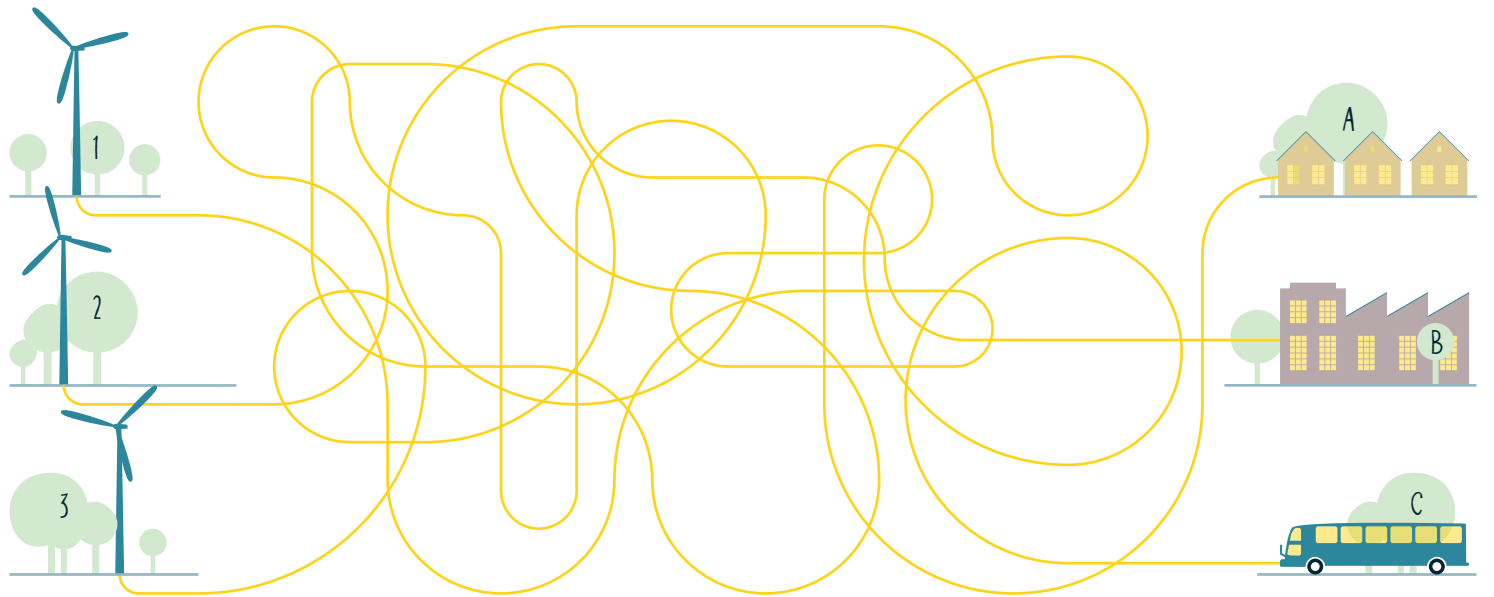


Wind turbines generate the most energy in wind speeds of 30 miles per hour. Modern turbines are typically tall because the wind moves faster high above the ground.



The first wind farm in the UK was built at Delabole in Cornwall in 1991 with 10 wind turbines. Today there are 5,383 commercial turbines in the UK.

Follow the lines to join the wind turbine to the clean energy user



colour the wind turbines and
make your own design

